

TIMBER DIAGRAM

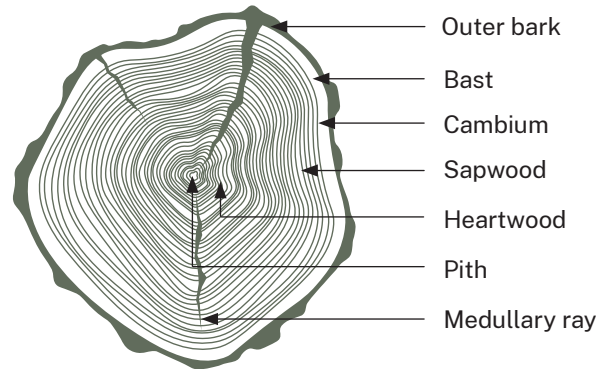
Timber veneer, a popular choice for enhancing interior design aesthetics, is manufactured using two primary methods: “peeling” the trunk of a tree or thinly slicing rectangular blocks of wood called flitches. In the Australian market, the standard thickness for most veneer panels is approximately 0.6mm. However, varying thicknesses can be produced to meet specific project requirements.

The distinctive grain appearance in timber veneer is a result of slicing through the growth rings of a tree. The angle at which the wood is sliced determines the unique visual characteristics of each veneer. Below are descriptions of the most common timber veneer cuts and grain patterns available:



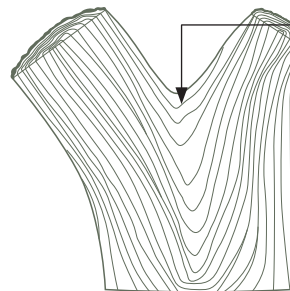
Crown

Also known as “flat cut” or “plain sliced,” crown cut veneers are obtained by slicing the log parallel to the growth rings. This method produces a grain pattern that showcases the natural characteristics of the wood, including cathedrals, curls, and flame-like figures. Crown cut veneers are versatile and widely used, offering a classic and traditional aesthetic.



Quarter Cut

In this method, the log is first quartered and then sliced perpendicular to the growth rings. Quarter cut veneers display straight grain patterns with an appealing straight and uniform appearance. They are popular for their elegant and timeless appeal.



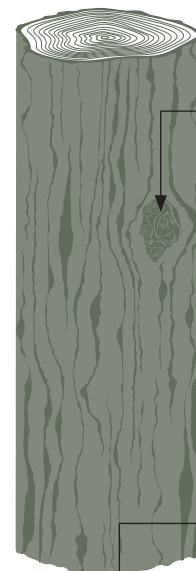
Crotch or Curl

veneer is cut from the junction of the trunk and branches.



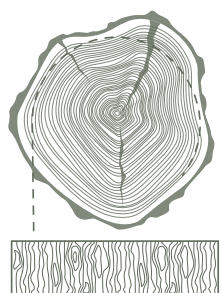
Rift Cut

Rift cut veneers are obtained by cutting the log at a slight angle to the growth rings. This cut produces a linear grain pattern with minimal figure or cathedrals. Rift cut veneers offer a contemporary and sophisticated look, often sought after for modern interior designs.



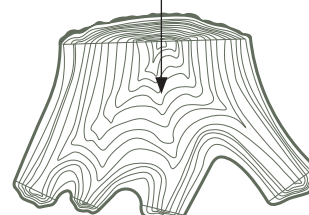
Burr (Burl)

venuers are end grain type growths which occur on some trees. These are highly valued as they are not present on every tree.



Rotary Cut

This cut involves peeling a log or trunk of a tree in a continuous motion. It produces a wide and repeating grain pattern with natural variations. Rotary cut veneers often showcase prominent cathedrals, creating a warm and traditional aesthetic.



Butt veneers are created from the base or roots of a tree. They are highly valued for their unique figuration.